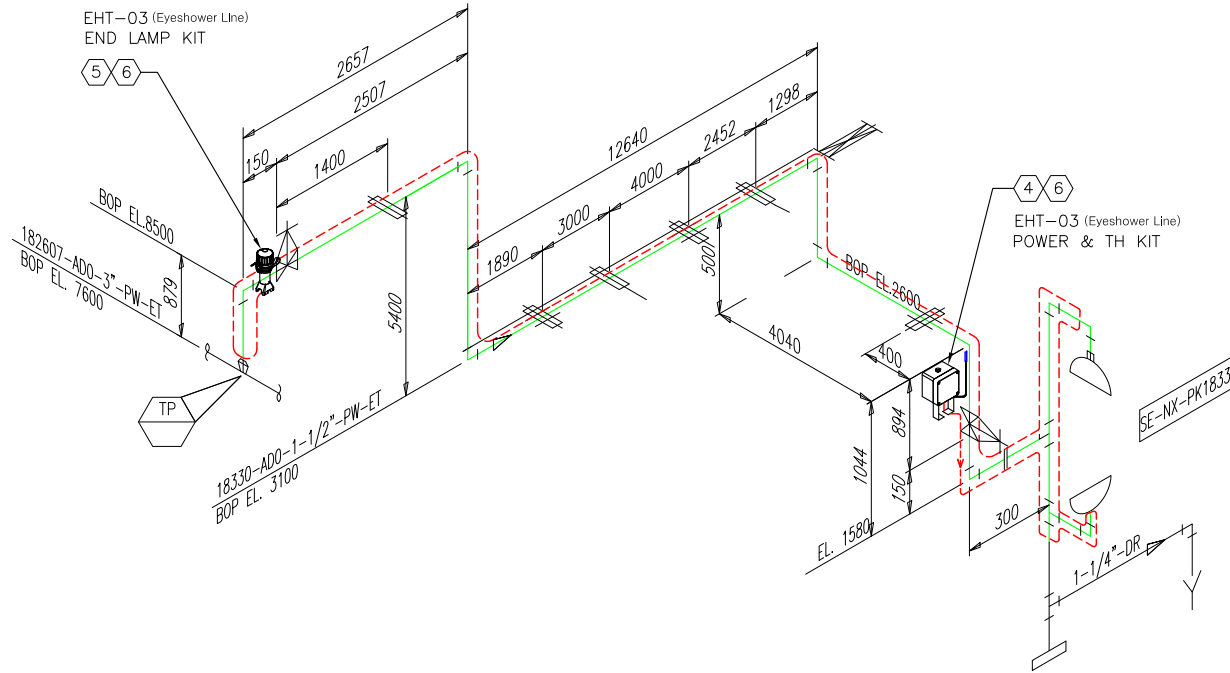





HEAT TRACE DATA																			
HEATER Line NO.	PIPE Diameter inch	PIPE LENGTH (m)	MAINTAIN TEMP. (°C)	MIN. AMBIENT TEMP. (°C)	OPERATING TEMP. (°C)	MAX. EXPOSURE TEMP. (°C)	INSULATION TYPE	INSULATION THICKNESS (mm)	HEATER CATALOG NO.	SAFETY FACTOR (%)	PIPE HEAT LOSS (W/m)	HEATR OUTPUT (W/m)	HEATR TRACE RATIO	HEATING CABLE LENGTH	CIRCUIT CB CURRENT (A)	CIRCUIT OPERATING CURRENT (A)	SEGMENT OPERATING LOAD (kW)	MAX CB Size (A)	CIRCUIT Oper Volt.
EHT-03 (Eyeshower line)	1.5	24.0	5	-18	65	80	EP	20	5BTV2-CT	20	16.7	17.2	1.0	34.90	4.7	2.6	0.64	30	220

BILL OF MATERIAL			
ITEM	QTY	CATALOG NUMBER	DESCRIPTION
①	34.90	5BTV2-CT	ELEC. HEATING CABLE
②		10BTV2-CT	ELEC. HEATING CABLE
③		10XTV2-CT	ELEC. HEATING CABLE
④	1	ETS-05-L2-E	POWER THERMOSTAT KIT
⑤	1	E-100-L-A	END LAMP KIT
⑥	3	PS-03	PIPE STRAP
⑦		PS-10	PIPE STRAP



NOTE:

INSTALLATION DETAILS

-  ELECTRIC HEAT TRACING THERMOSTAT or CONTROLLER
-  ELECTRIC HEAT TRACING END LAMP KIT
-  ELECTRIC HEAT TRACING CABLE

CLIENT :

SK global chemical

(주) 한국아쿠오시스

 **강 남 상 공 (주)**
KANGNAMSANGGONGS CO., LTD.

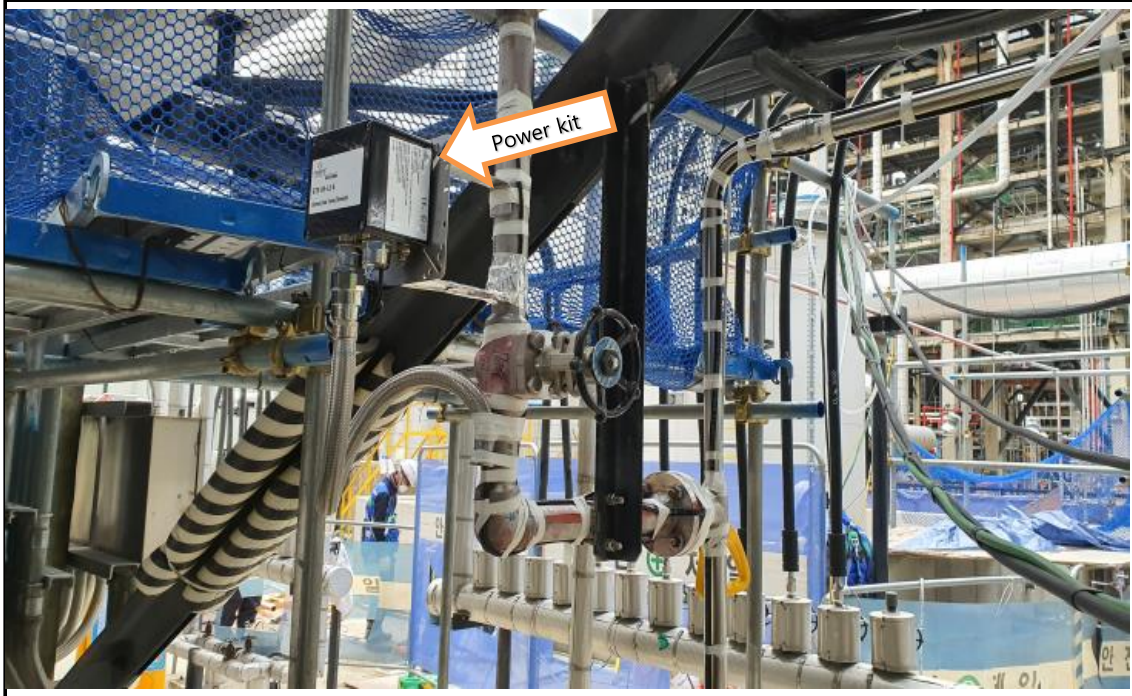
PROJECT :

NEXLENE 공정 폐수 오염 저감 시설 설치

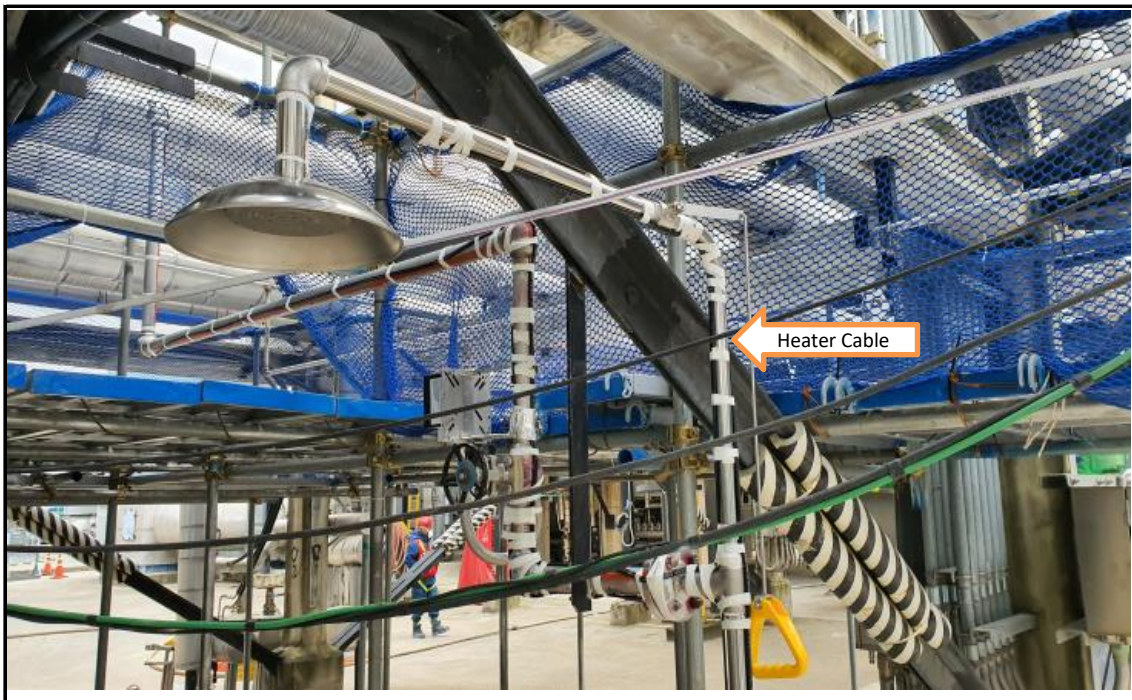
LINE NO.	18330-AD0-1-1/2"-PW-ET	COMMODITY
DRAWING No.	EHT-03 (Eyeshower Line)	SHT.No. 1 OF 1 REV. 0

	YES	NO	INSUL	YES	NO	CONDITION	PRESS kg/cm ²	TEMP. °C	REF. P&ID DWG.	FAB. SPEC. SP.	YES	NO								
	✓			✓							✓	✓								
ELECT.TRACE.	✓			CODE: ET		DESIGN	10.0	15	P1101-NX700-04-052A	FIELD FAB.	✓									
STRESS CHECK		✓		TH'K: 20		OPERATING	ATM	AMB	REF. PLAN DWG.	SHOP FAB.		✓								
X-RAY %	10		STEAM TRACING	SIZE: -		TEST(WATER)	15.0	-	P1101-NX700-51-103-01 P1101-NX700-51-103-02 P1101-NX700-51-312-02	POST WELD HEAT TREAT		✓		NO.	DATE	REVISIONS	DRAWN	CHK'D	APP'D	

Electric Heat Tracing



제 목	공장폐수처리장치 EHT 설치 공사 (Eyeshower EHT-03)
내 용	Power Kit (ETS-05-L2-E) 설치 작업

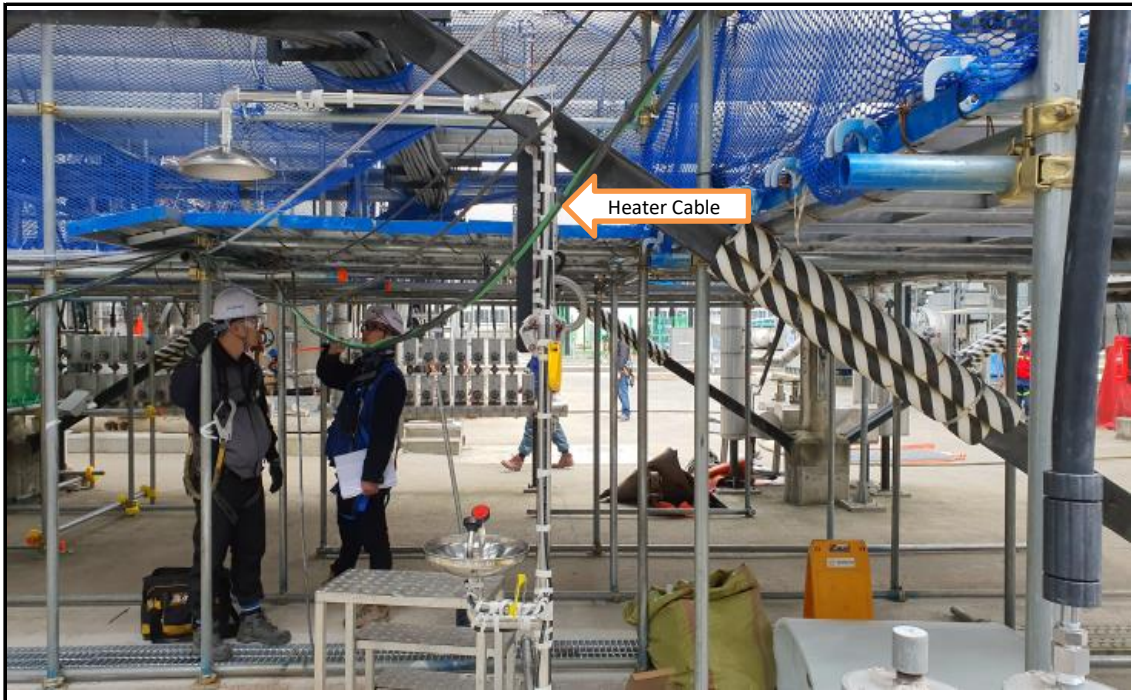


제 목	공장폐수처리장치 EHT 설치 공사 (Eyeshower EHT-03)
내 용	Heater Cable 설치 작업

Electric Heat Tracing

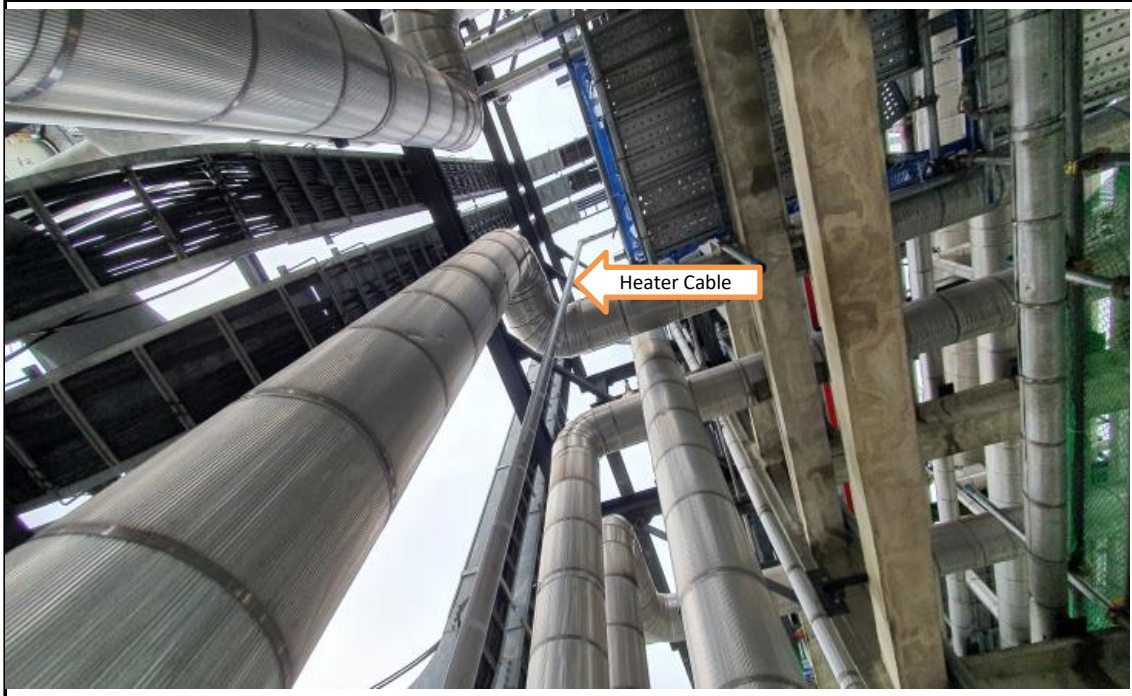


제 목	공장폐수처리장치 EHT 설치 공사 (Eyeshower EHT-03)
내 용	Heater Cable 설치 작업

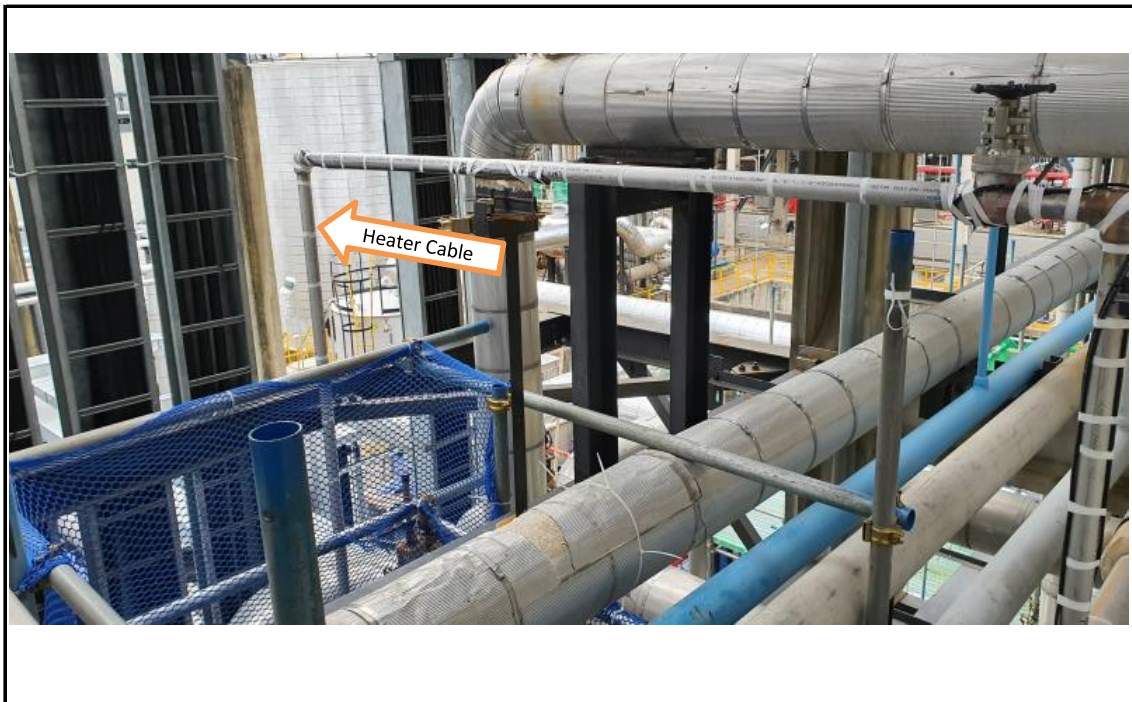


제 목	공장폐수처리장치 EHT 설치 공사 (Eyeshower EHT-03)
내 용	Heater Cable 설치 작업

Electric Heat Tracing

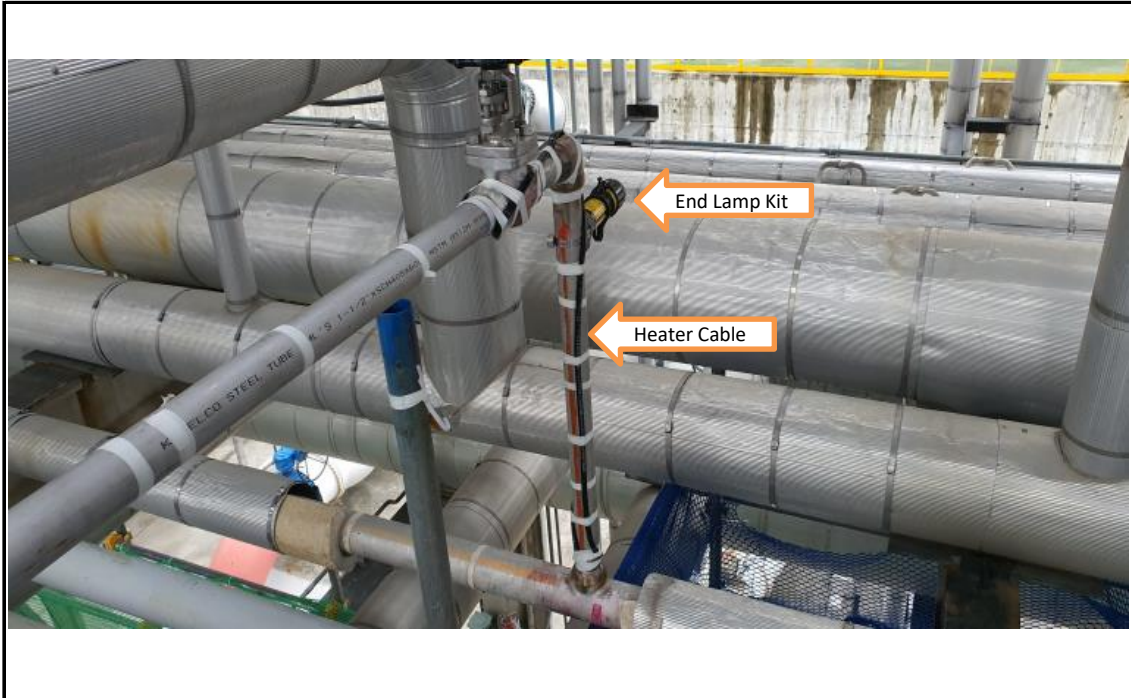


제 목	공장폐수처리장치 EHT 설치 공사 (Eyeshower EHT-03)
내 용	Heater Cable 설치 작업



제 목	공장폐수처리장치 EHT 설치 공사 (Eyeshower EHT-03)
내 용	Heater Cable 설치 작업

Electric Heat Tracing



제 목	공장폐수처리장치 EHT 설치 공사 (Eyeshower EHT-03)
내 용	Heater Cable 설치 작업 및 End Kit (E-100-L-A) 설치



제 목	공장폐수처리장치 EHT 설치 공사 (Eyeshower EHT-03)
내 용	설치후 절연저항 Test : ∞ M Ω